



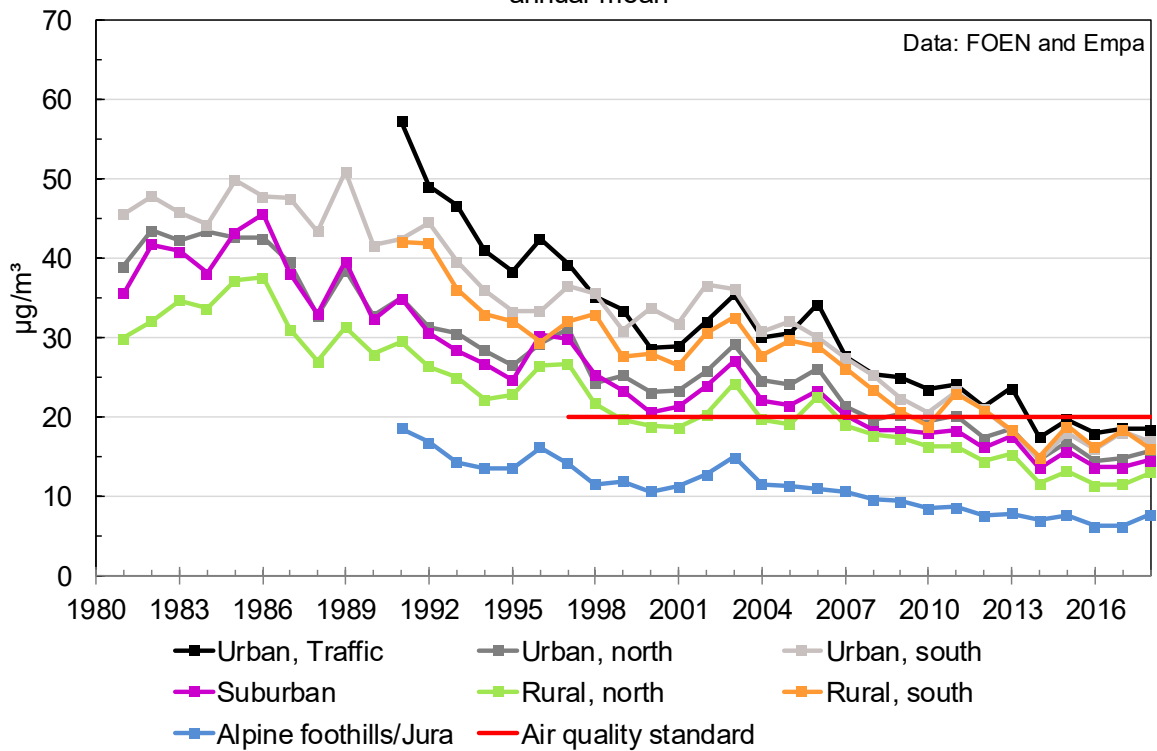
Graphics of annual values NABEL

The National Air Pollution Monitoring Network (NABEL) measures air pollution levels at 16 locations in Switzerland and monitors the development over the past few decades. The stations are distributed throughout the country and monitor pollution at typical locations (e.g. city-centre streets, residential areas, rural stations).

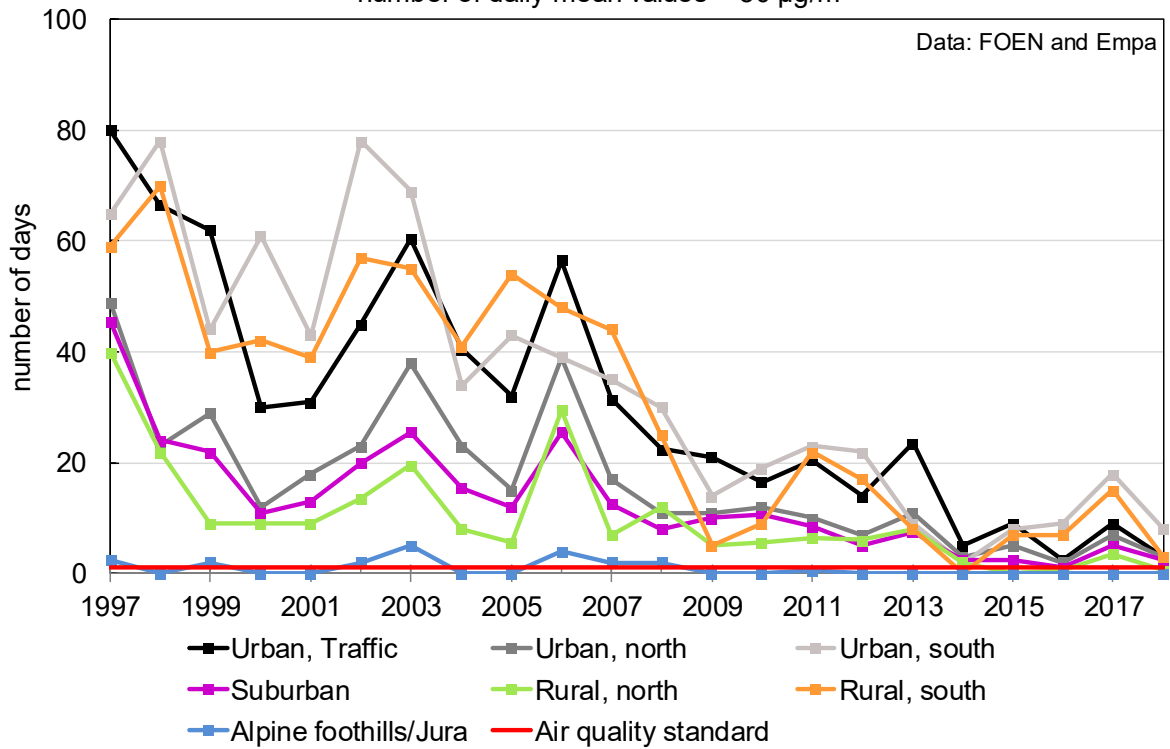
Time series data older than 1990 often exhibit gaps of a certain length. As pollutant concentrations vary considerably throughout the year, these gaps cannot be simply ignored. The data series were therefore completed as follows: the monthly averages were calculated, then the missing monthly averages were obtained by linear regression of data series from another measuring station exhibiting similar variation over time, and finally, providing there were at least four valid monthly averages available for the station, the yearly average was then calculated from these values. Isolated gaps in the data series of the stations of Basel-Binningen (NO₂) and Dübendorf (SO₂) were interpolated directly by linear regression of the yearly averages. The Bern measuring station had to be moved in 1997, though it remained along the same thoroughfare hemmed in by tall buildings. The resulting inconsistencies in the time series were corrected.

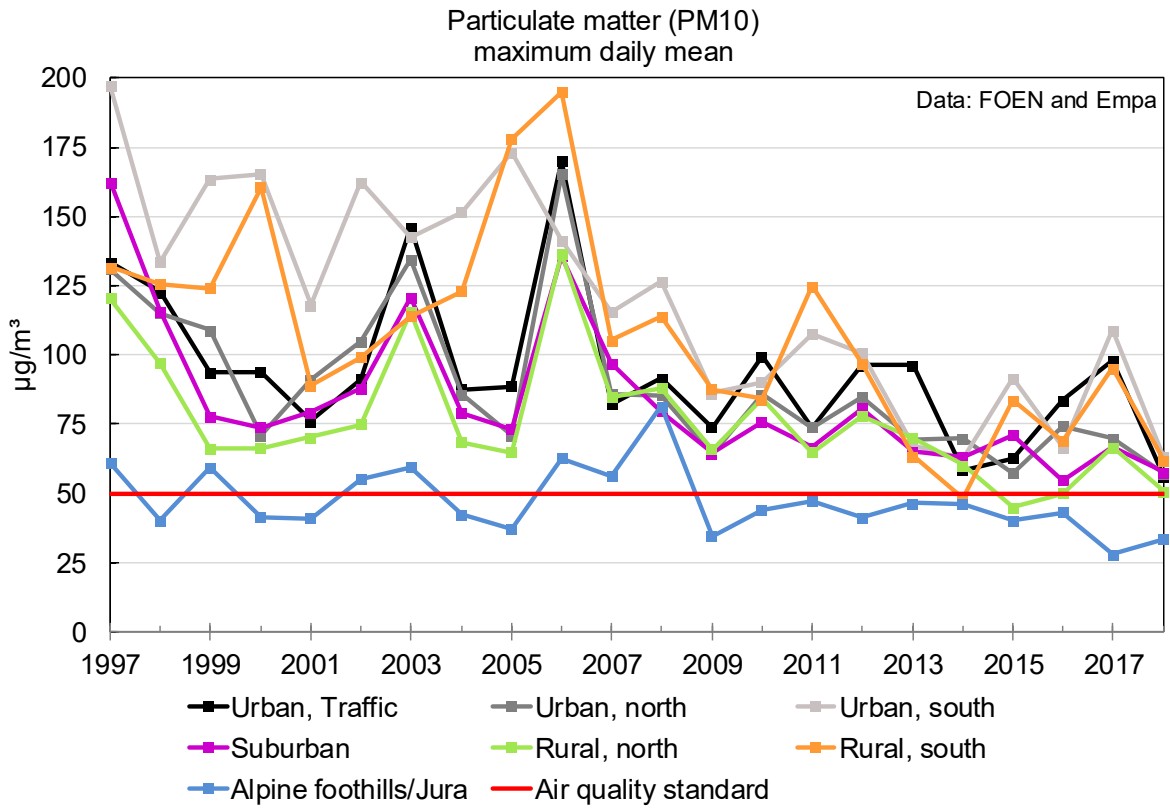
Particulate matter (PM10)	2
Ozone (O₃)	4
Nitrogen dioxide (NO₂)	6
Sulfur dioxide (SO₂)	8
Carbon monoxide (CO)	10
Lead (Pb)	11
Cadmium (Cd)	12
Zinc (Zn)	13
Dust fallout	13

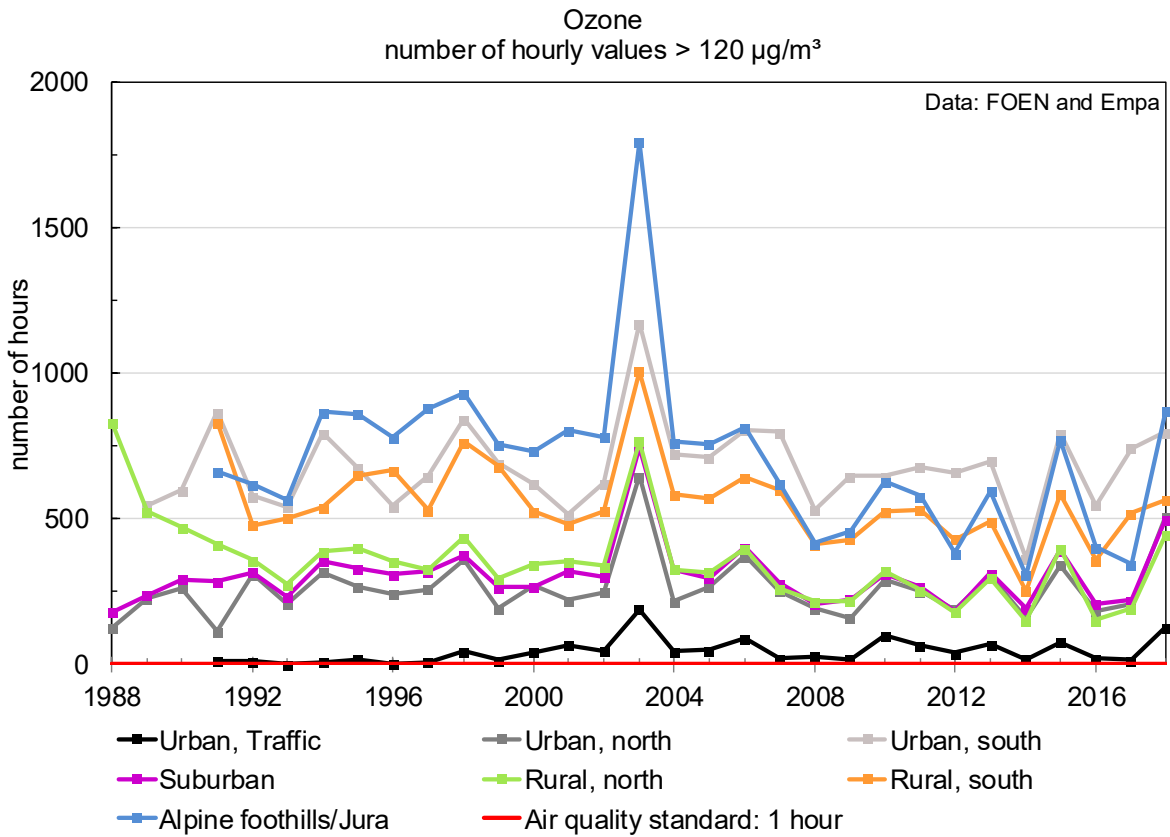
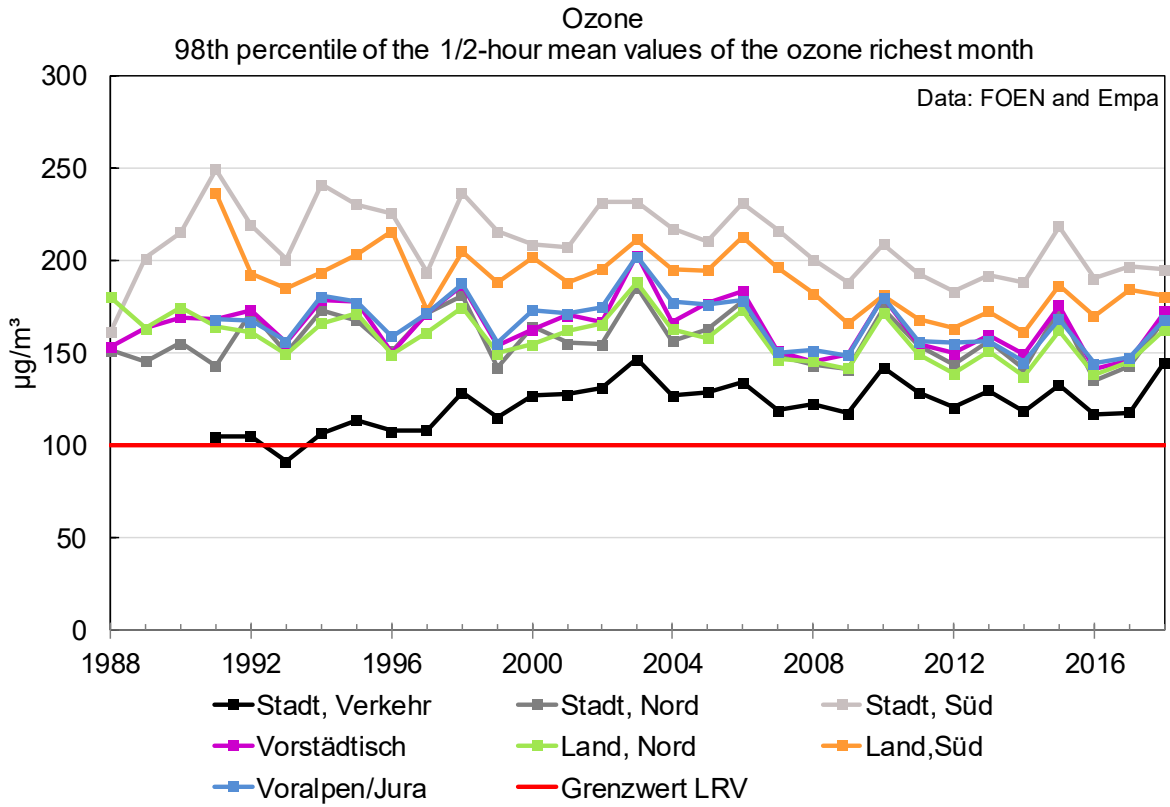
Particulate matter (PM10, prior to 1997 calculated from TSP)
annual mean

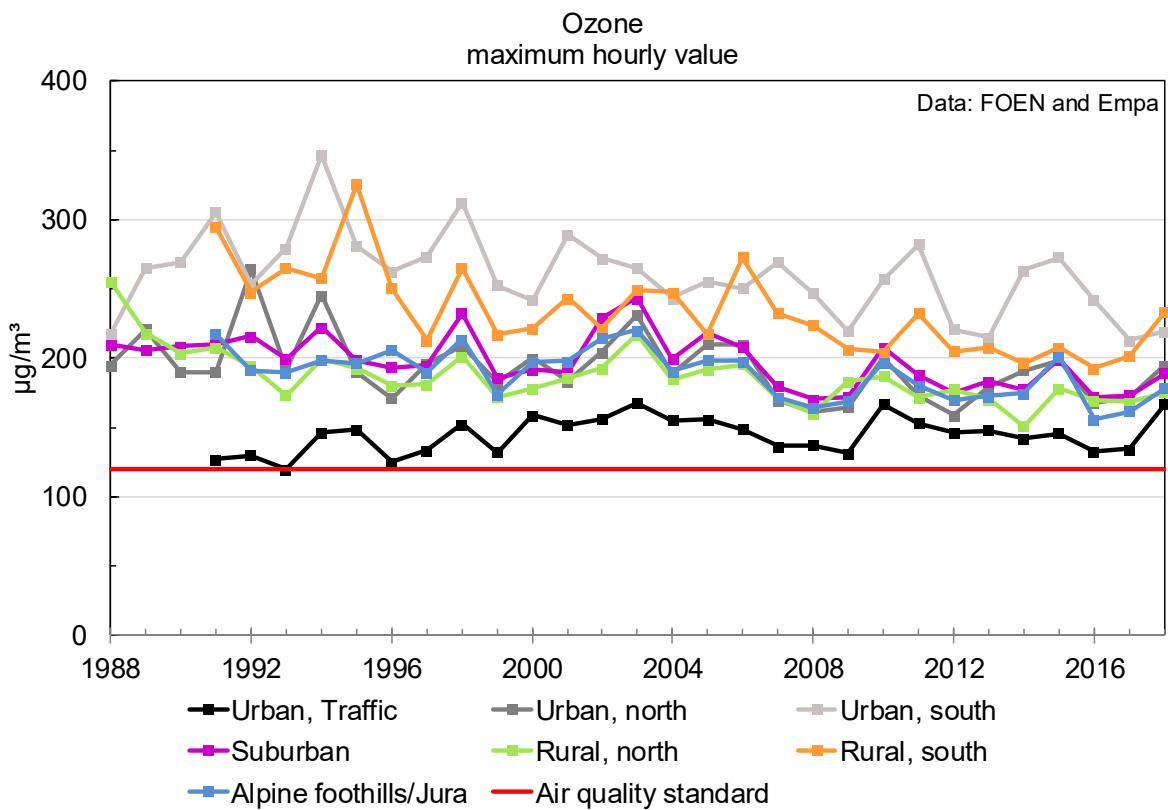
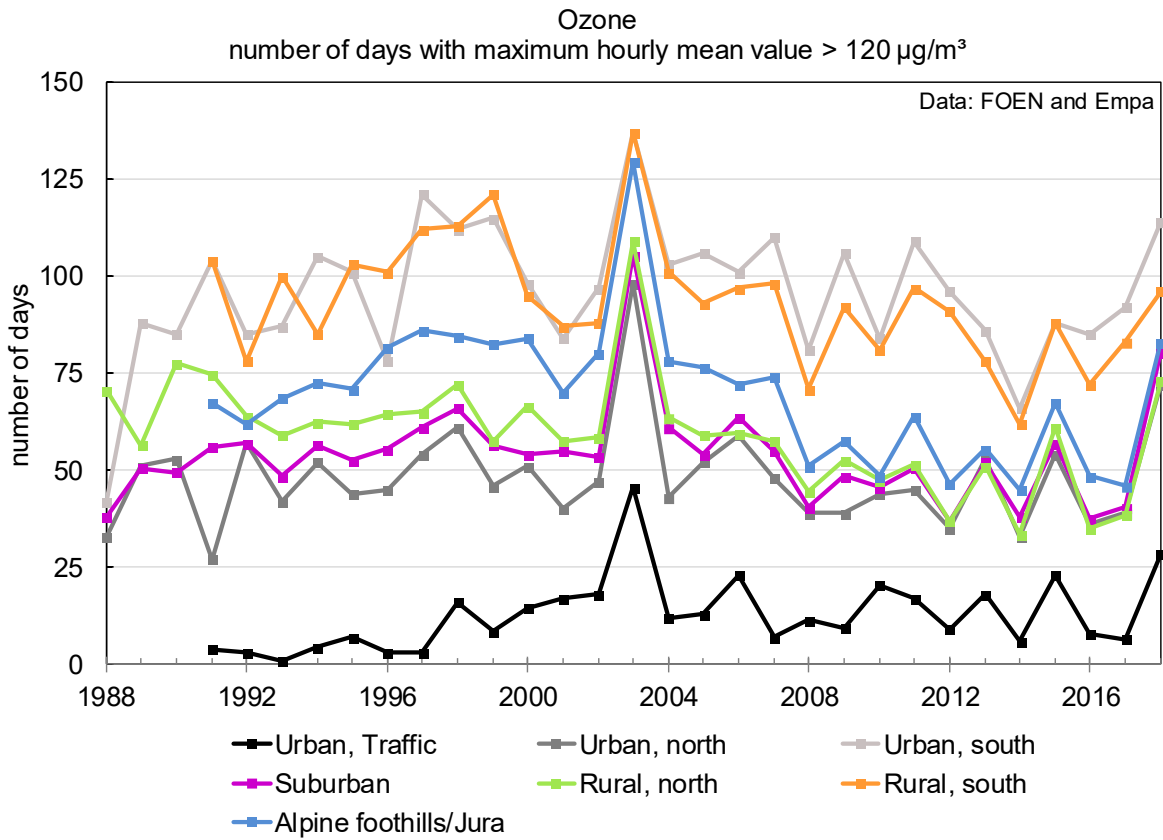


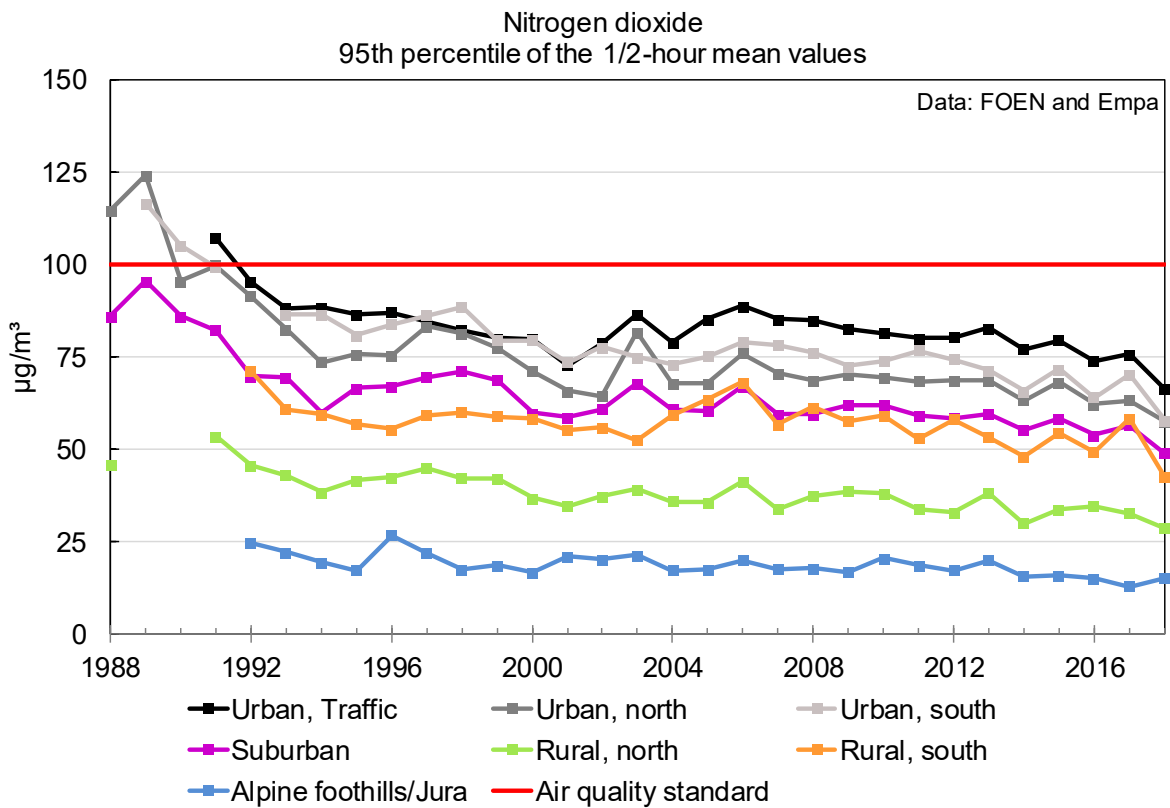
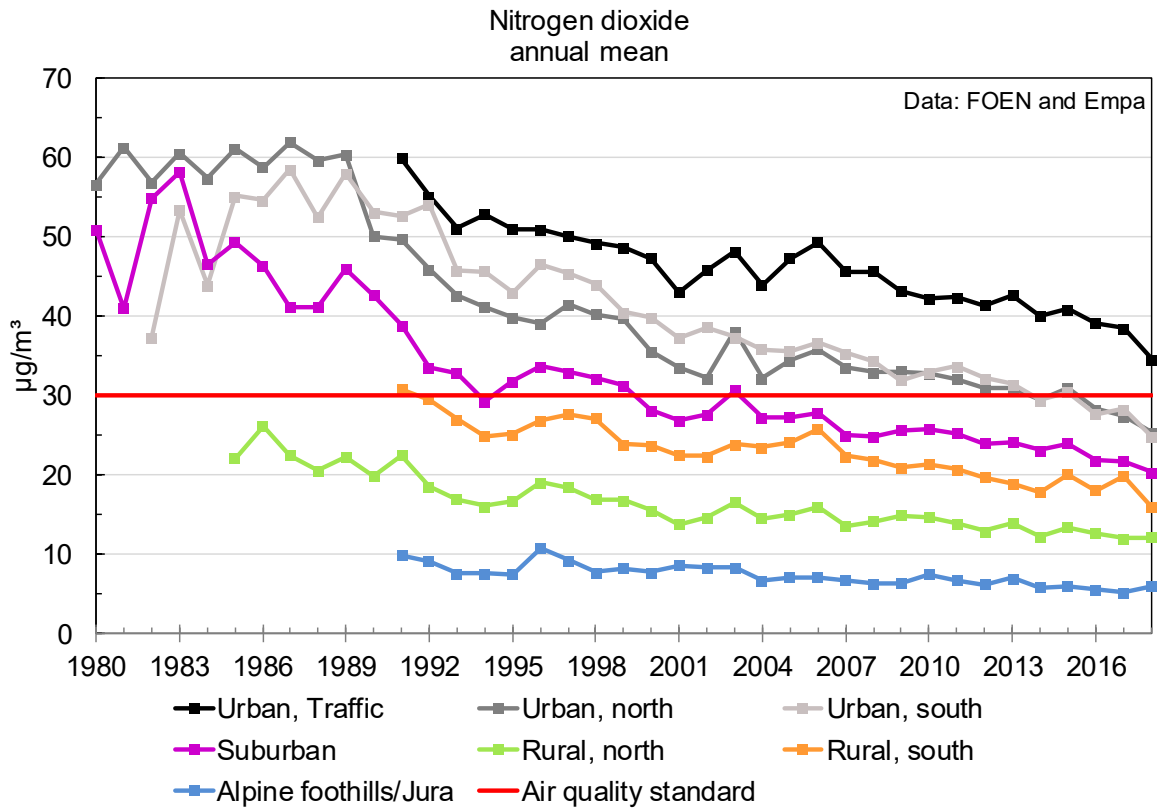
Particulate matter (PM10)
number of daily mean values > 50 µg/m³

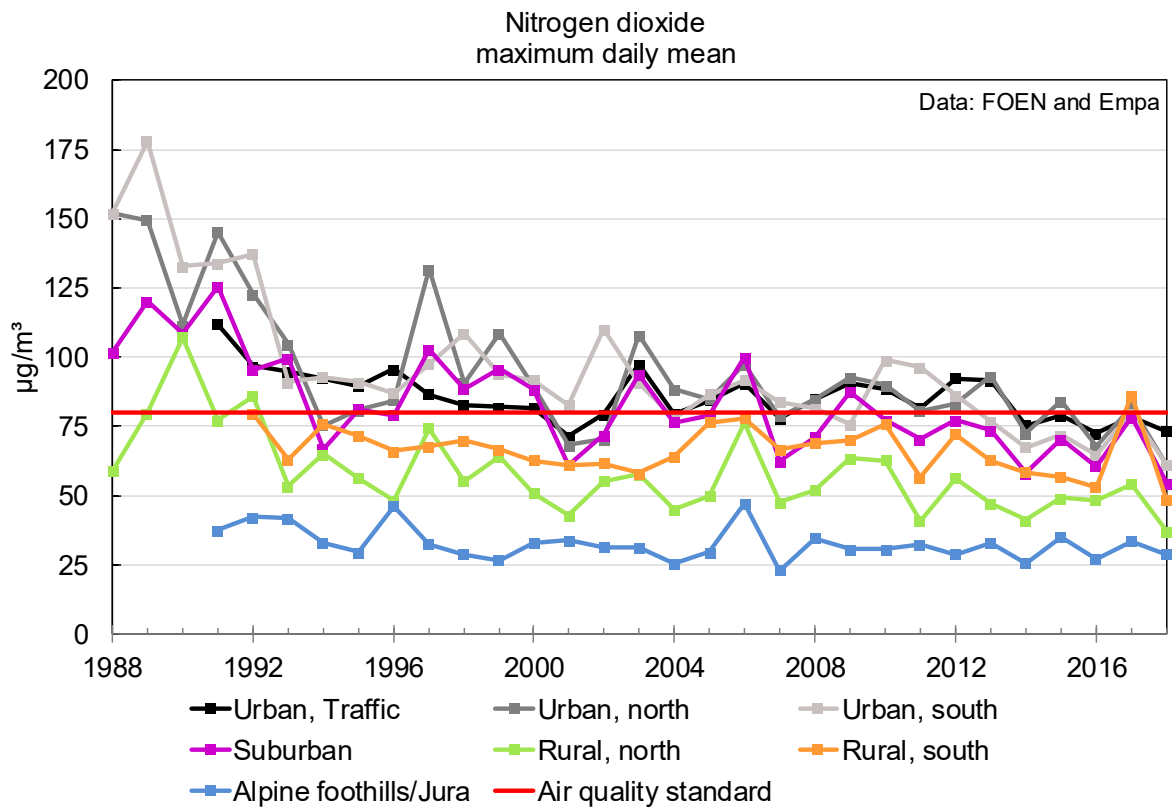
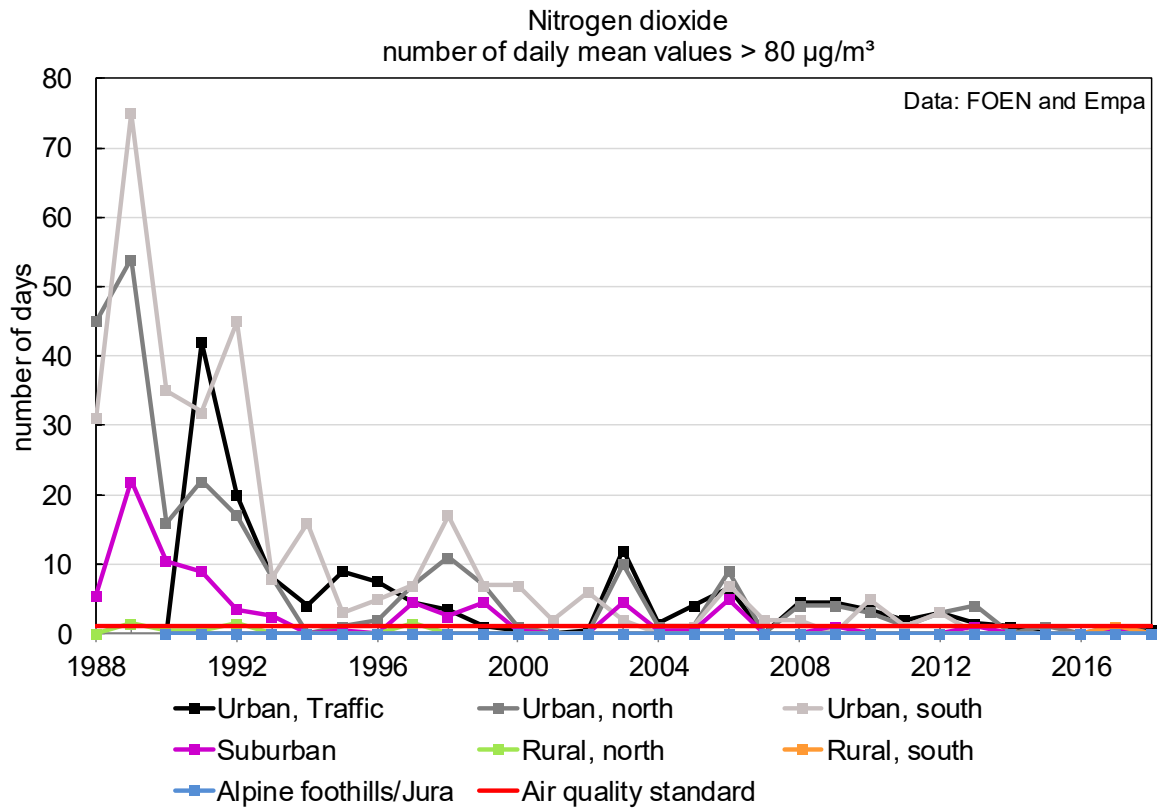


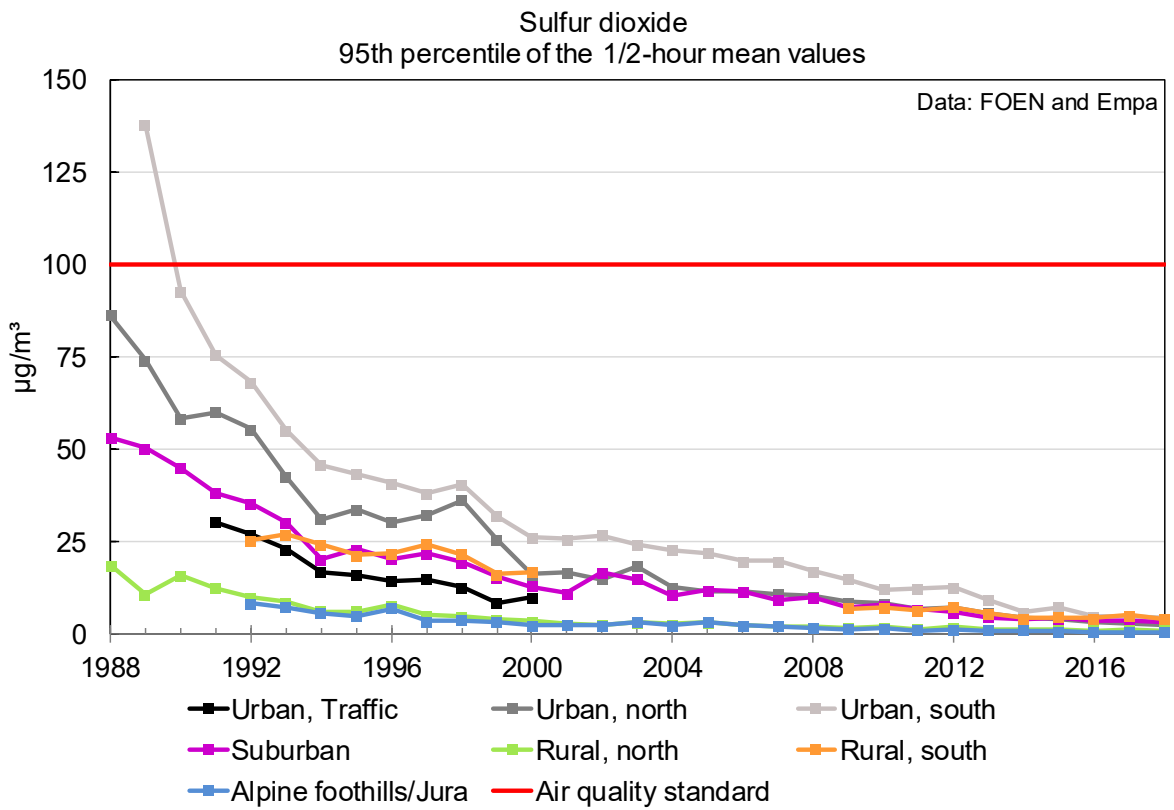
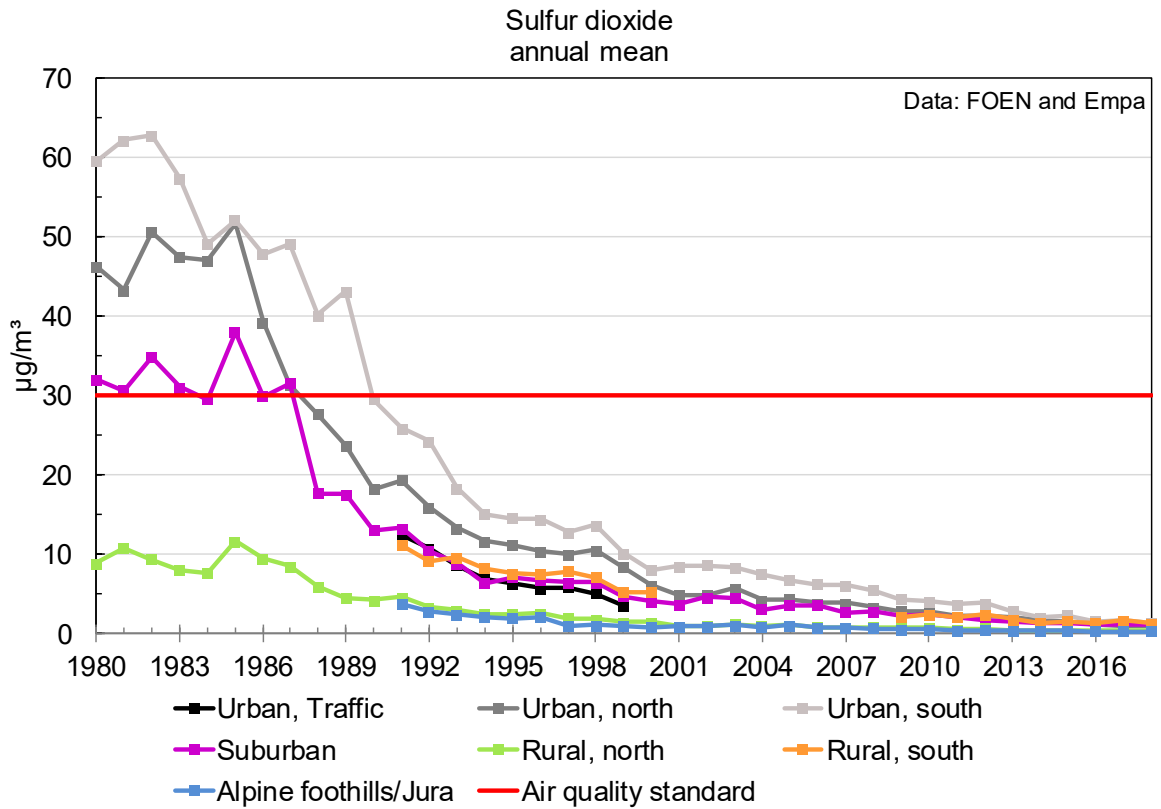




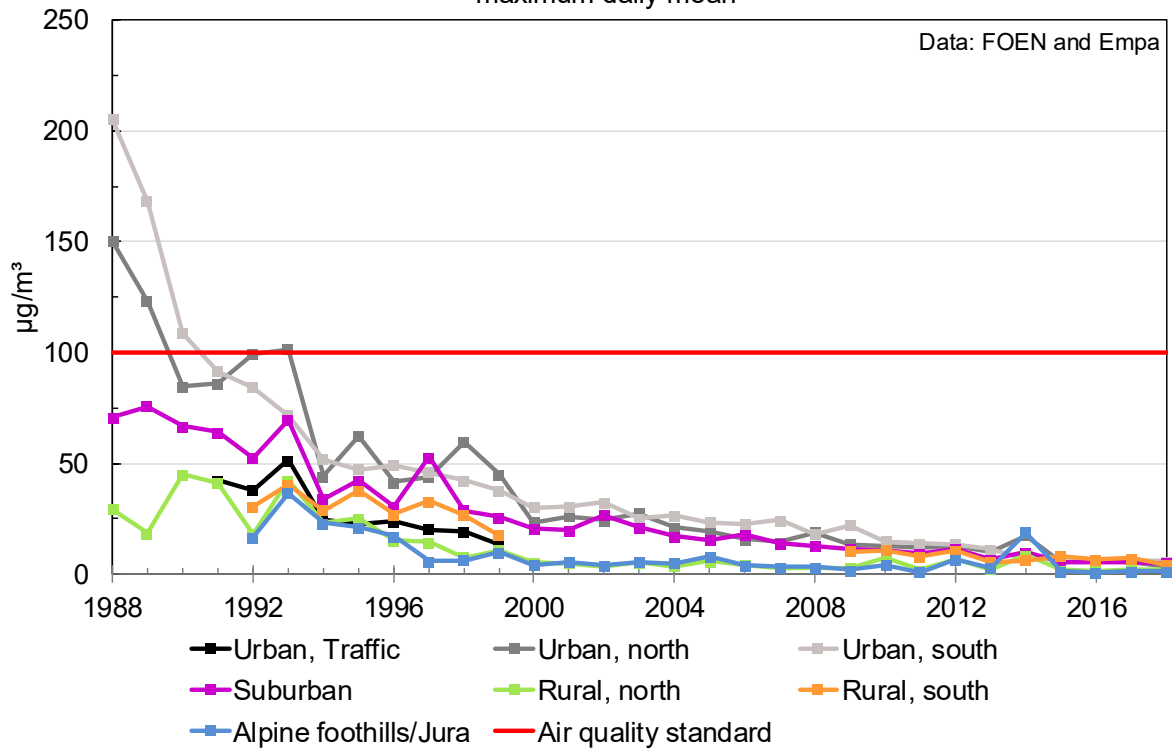


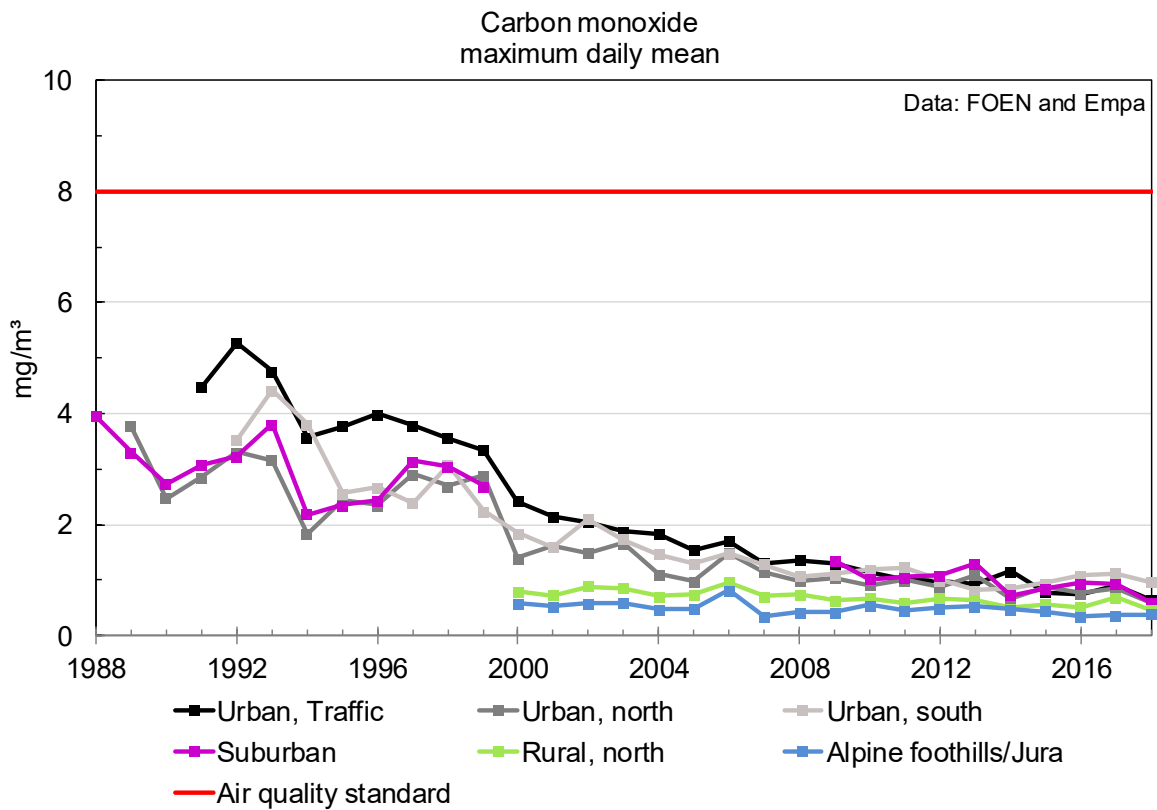
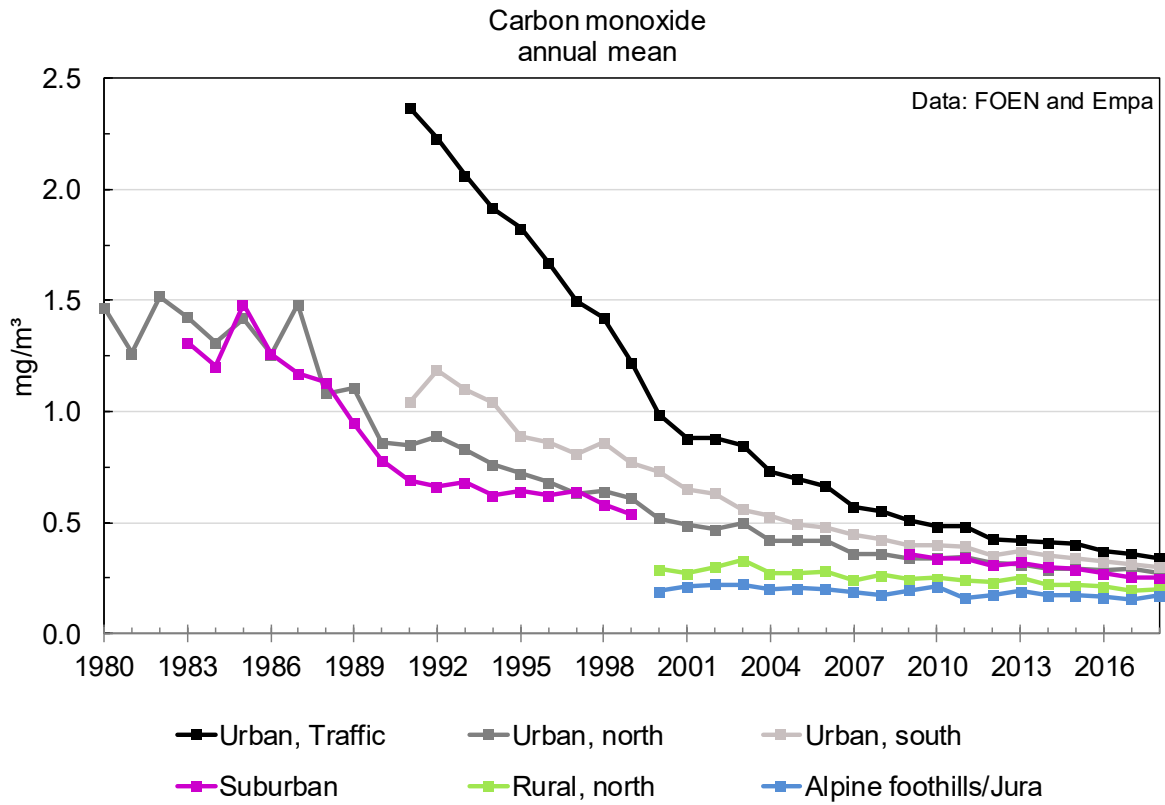




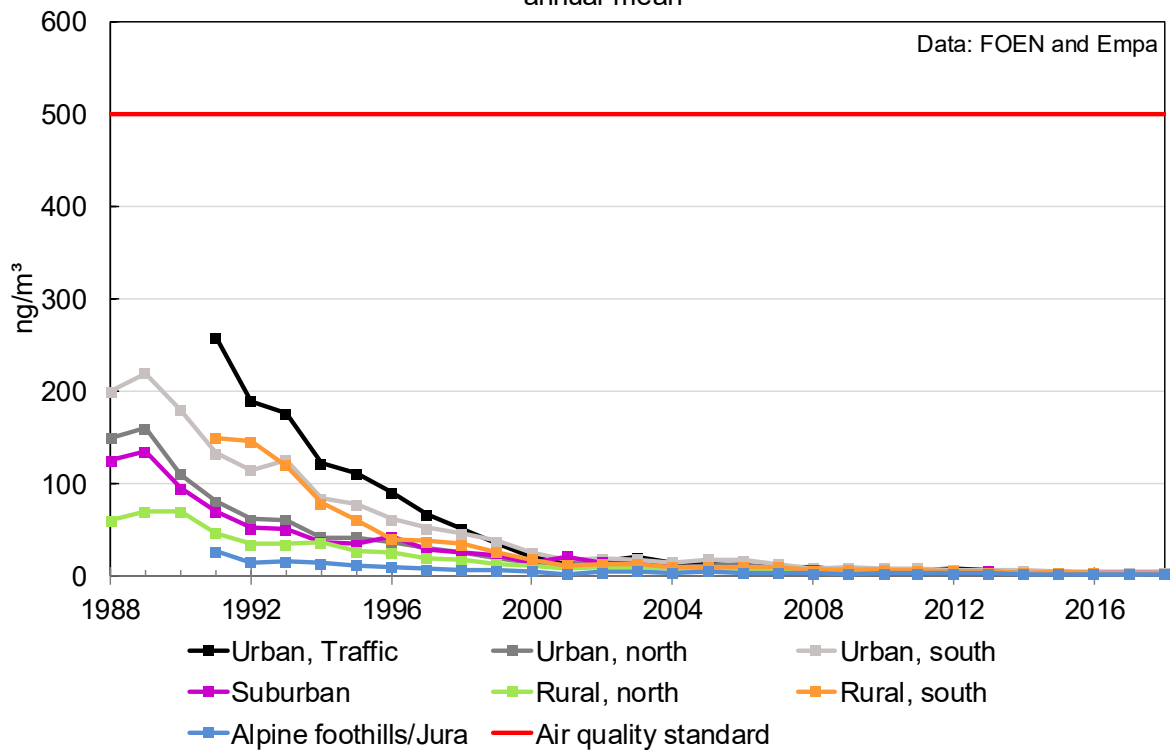


Sulfur dioxide maximum daily mean

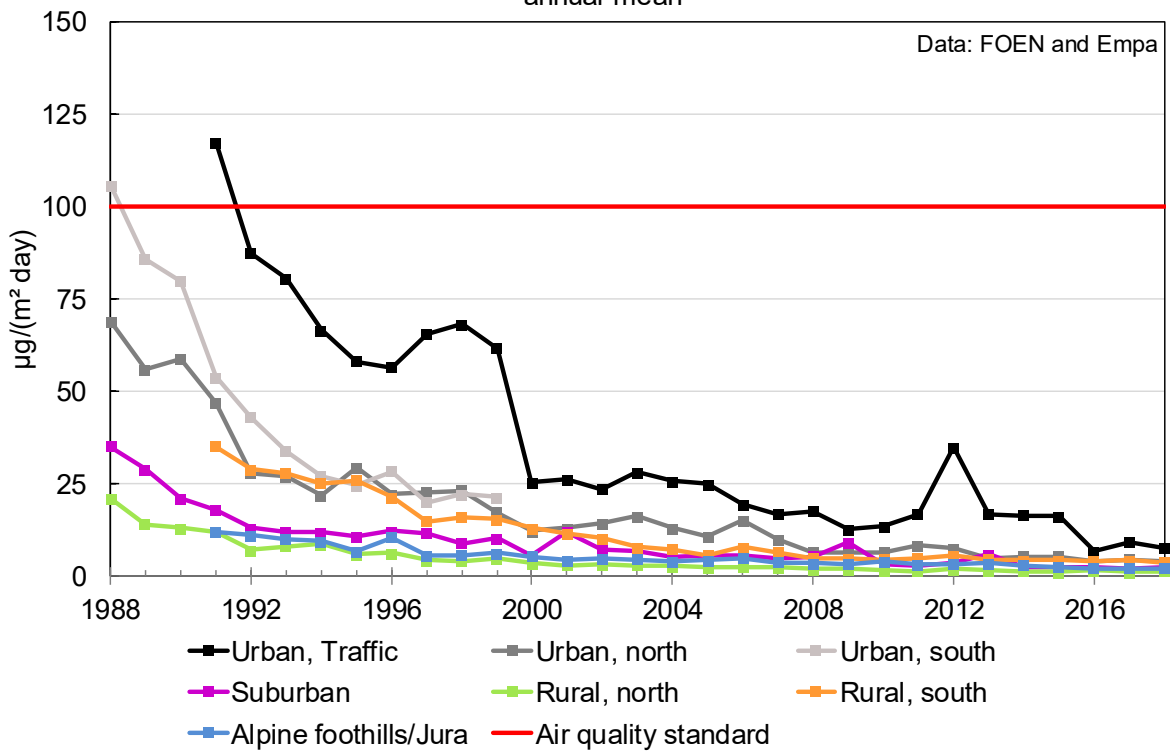




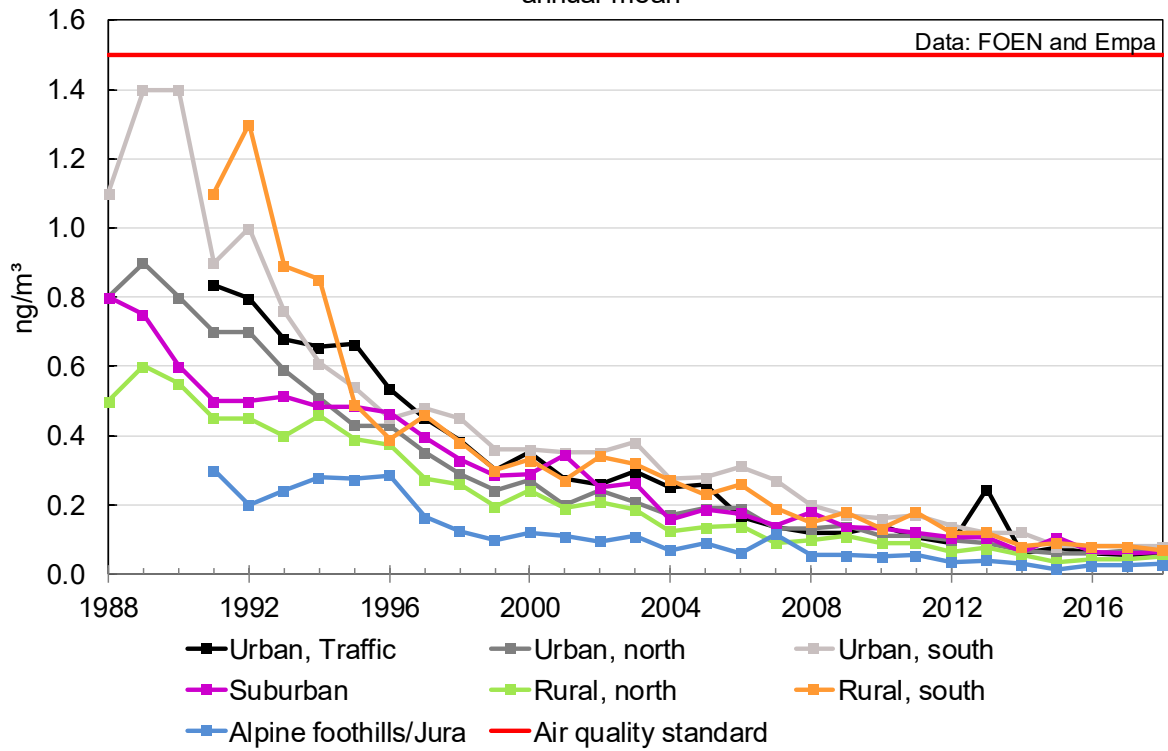
Lead in particulate matter (PM10, prior to 1997 calculated from TSP)
annual mean



Lead in dust fallout
annual mean



Cadmium in particulate matter (PM10, prior to 1997 calculated from TSP)
annual mean



Cadmium in dust fallout
annual mean

